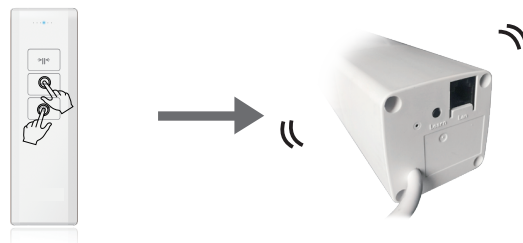


Close the Manual operation Function

Press the STOP & OPEN together till the motor vibrates. The Manual operation function is closed. Users pull the curtain by hand, but motor can not run. Repeat this operation, this function will restart.



Press the STOP & OPEN together, don't loosen until the motor vibrates once.

The motor will vibrate once in every direction

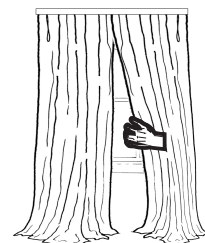
Open the Manual operation Function

Press the STOP & OPEN together till the motor vibrates. The Manual operation function is closed. User can pull the curtain by hand, and the motor can run also. Repeat this operation, this function will restart.



Press the STOP & OPEN together, don't loosen until the motor vibrates once.

Manual operation Function is opened



Setting the position

When powered on, the curtain will run without any setting. But motor will calculate the length in order to set the open&close position. And new position will replace the old one.



Short press PROGRAM



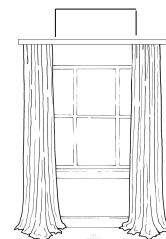
The motor will vibrate once in every direction



Press OPEN button



The motor vibrates once again.



Open position setting is finished.

The operation is same for setting the position of another direction

If the distance of two positions is less than 30cm, the setting is failed.

Delete the position



Short press PROGRAM



The motor will vibrate once in every direction



Press STOP button



Press OPEN button



The motor vibrates once again.

2. Long press the MATCH button, the light will glitter 3 times. Then the motor will vibrate once, all the positions are deleted.



Long press MATCH button



The light glitters 3 times



The motor vibrates once again.

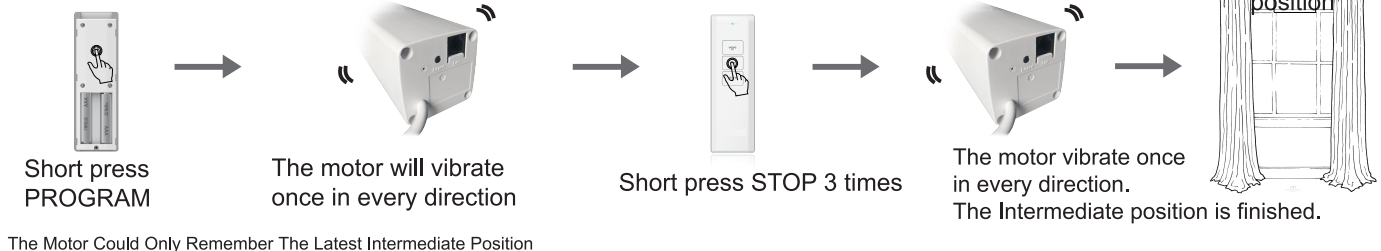


Deleting is finished.

The method is same for deleting the position in another direction

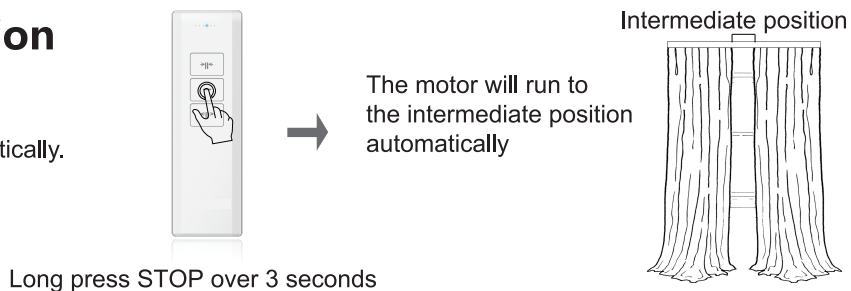
3, Repeat the electricity

Intermediate position



Start the Intermediate position

Long press STOP within 3 seconds,
the motor will run to the intermediate position automatically.

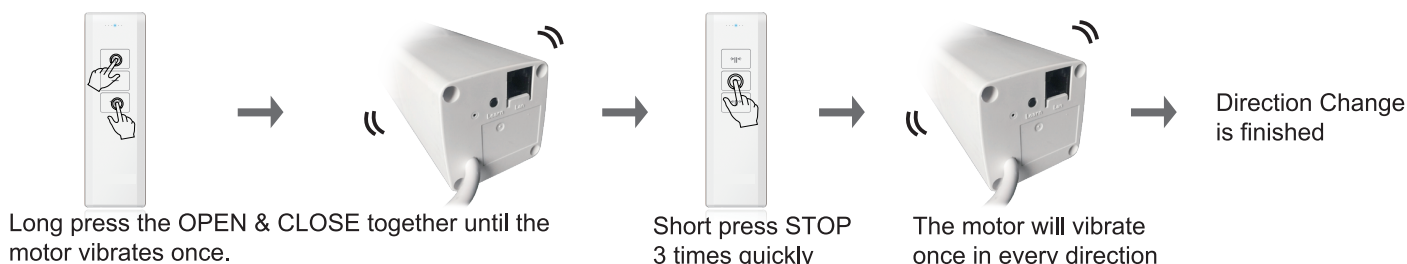


Delete Intermediate position

Method 1: powered on again, all positions are deleted.
Method 2: long press MATCH button

Direction Change

When the motor run in different direction which is not same as the emitter order, user could operate as follows:



Delete the current emitter



Delete all emitters

Press OPEN and CLOSE together, the motor will vibrate. Then press OPEN 3 times, the motor vibrate again. Delete all emitters.

